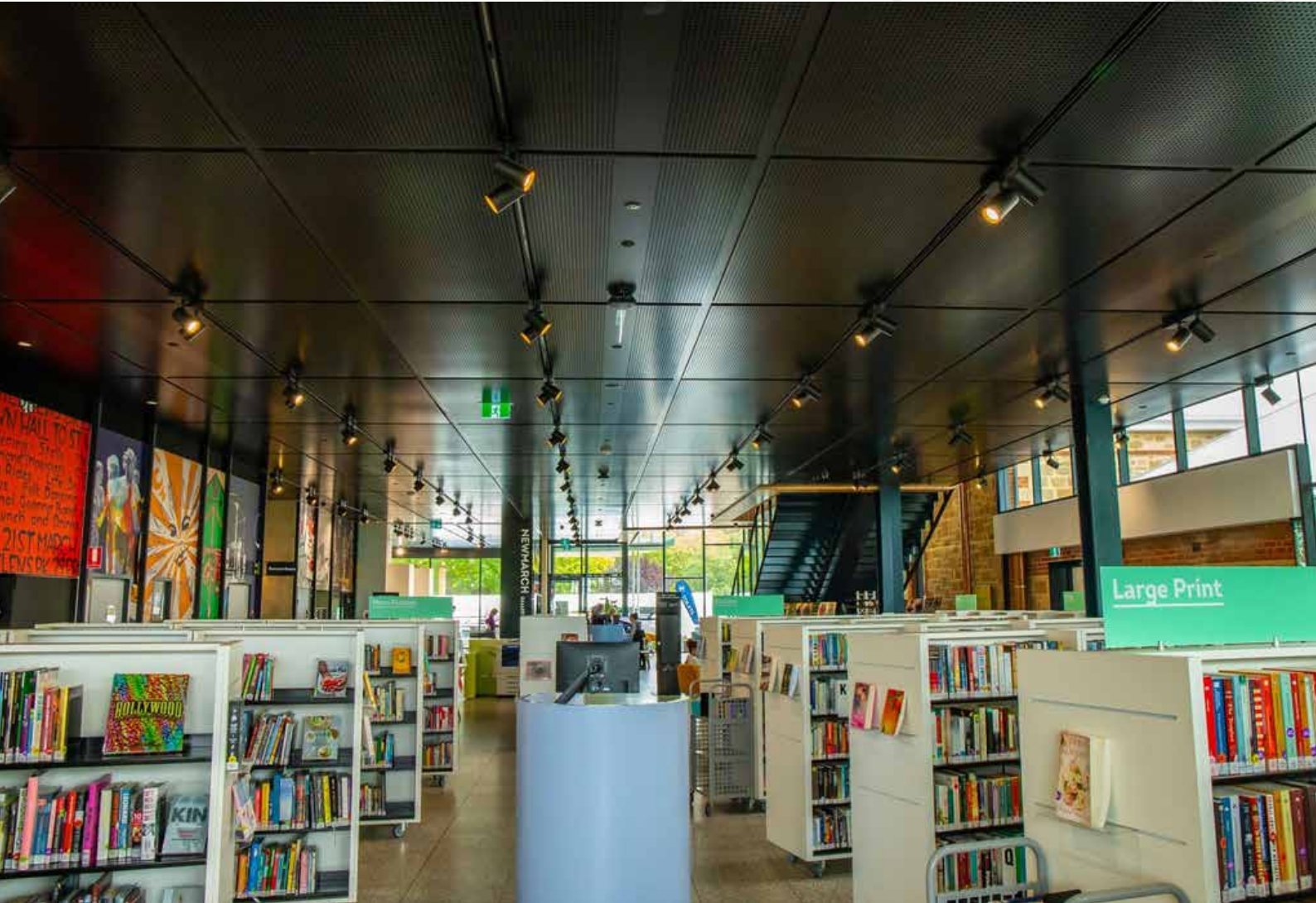


KEY-LENA



KEYSTONE
LININGS & ACOUSTICS

A graphic element consisting of a grid of blue dots of varying sizes, arranged in a pattern that suggests a key or a star shape, positioned to the right of the company name.

We bring Architects Imagination to Life

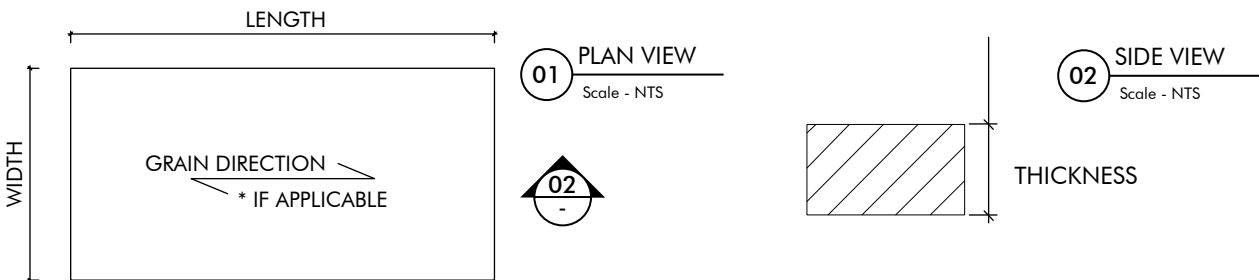
www.KeystoneLinings.com.au



Adelaide Botanic High School, Adelaide

KEY-LENA

STANDARD SHEET SIZE AVAILABILITY



| KEY-LENA | STD MDF EO - GROUP 3 | | | | | |
|------------------------------|----------------------|------|------|------|------|------|
| | 9mm | 12mm | 16mm | 18mm | 25mm | 32mm |
| 3600 x 1800 | ✓ | ✓ | ✓ | ✓ | ✓ | ✓ |
| 3600 x 1200 | ✓ | ✓ | ✓ | ✓ | ✓ | ✓ |
| 2700 x 1200 | ✓ | ✓ | ✓ | ✓ | ✓ | ✓ |
| 2400 x 1200 | ✓ | ✓ | ✓ | ✓ | ✓ | ✓ |
| Weights (Kg/m ²) | 7.0 | 9.0 | 11.6 | 13.1 | 17.6 | 22.1 |

| KEY-LENA | BLACK MR MDF (NON FIRE RATED) | | | | | |
|------------------------------|-------------------------------|------|------|------|------|------|
| | 9mm | 12mm | 16mm | 18mm | 25mm | 32mm |
| 3050 x 1220 | ✓ | ✓ | ✓ | ✓ | - | - |
| 2440 x 1220 | ✓ | ✓ | ✓ | ✓ | - | - |
| Weights (Kg/m ²) | 7.0 | 9.0 | 11.6 | 13.1 | 17.6 | 22.1 |

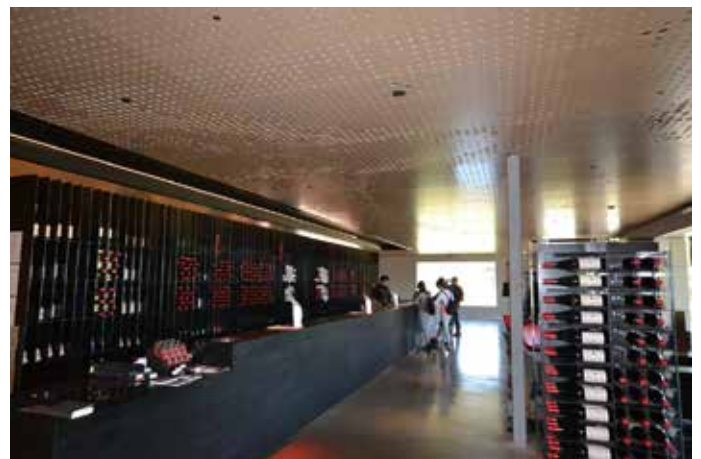
THE LAKES HOTEL



UNISA PRIDHAM HALL



PENFOLDS MAGILL ESTATE



ADELAIDE BOTANIC HIGH SCHOOL, ADELAIDE



PROSPECT PUBLIC LIBRARY



GRANT THORNTON OFFICE





Level 1, 7-8 Davis Road,
Wetherill Park, NSW 2164
02 9604 8813
www.KeystoneLinings.com.au