

KEY-INK



KEYSTONE
LININGS & ACOUSTICS

A graphic element consisting of a grid of blue dots of varying sizes, arranged in a pattern that suggests a keyhole or a stylized 'K' shape, positioned to the right of the company name.

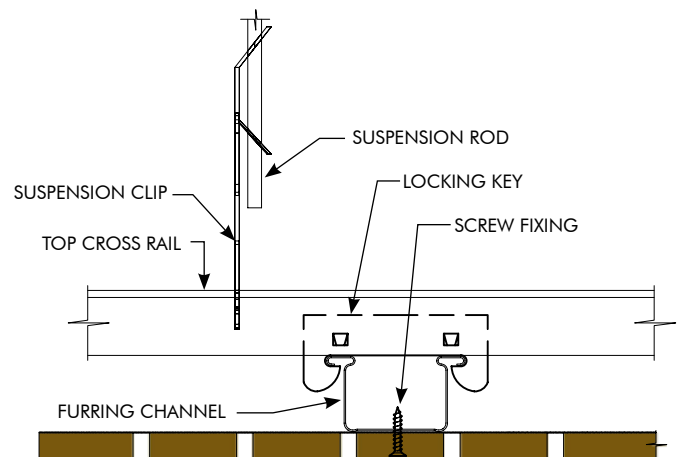
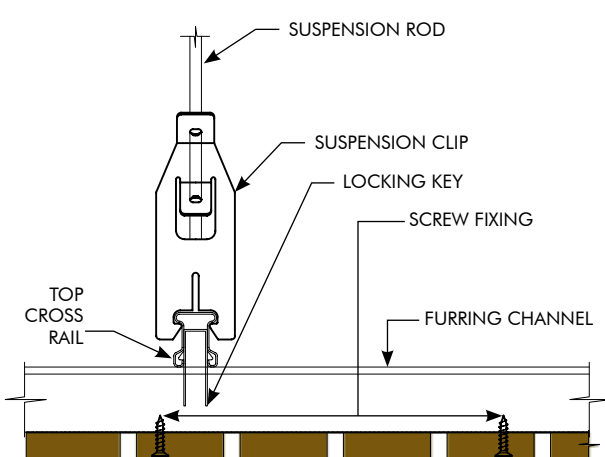
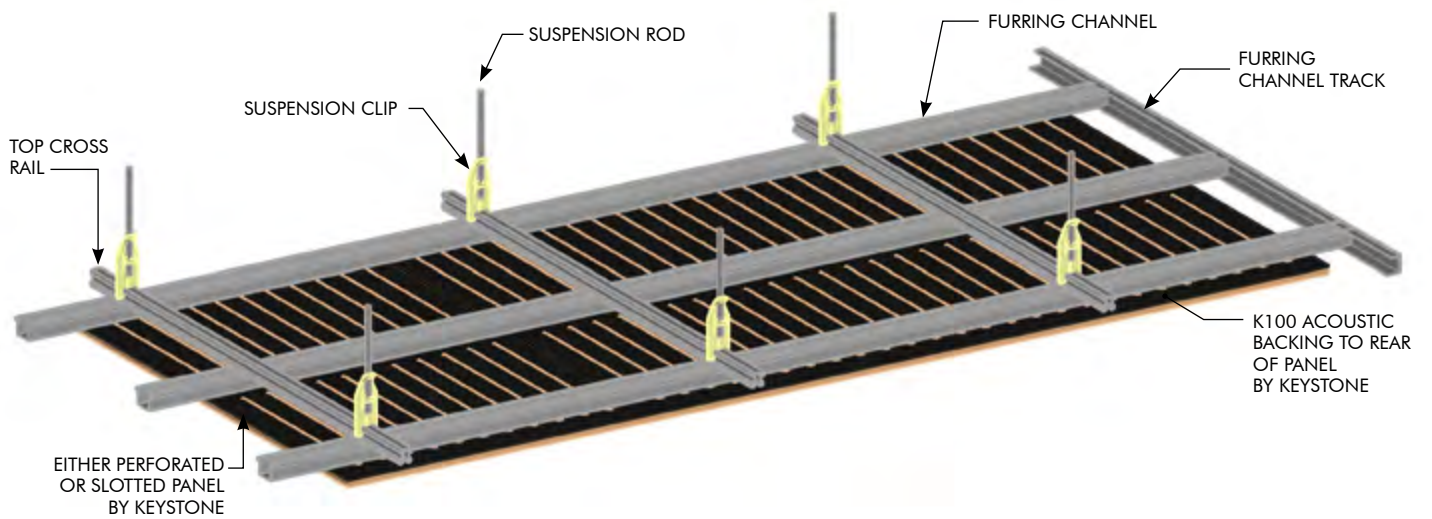
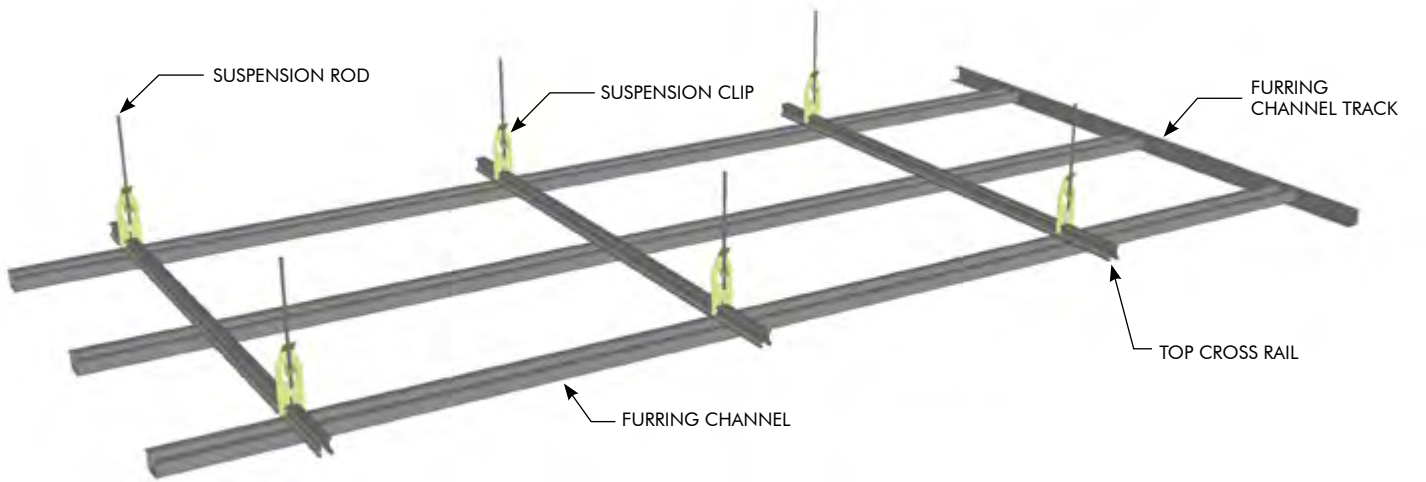
We bring Architects Imagination to Life

www.KeystoneLinings.com.au

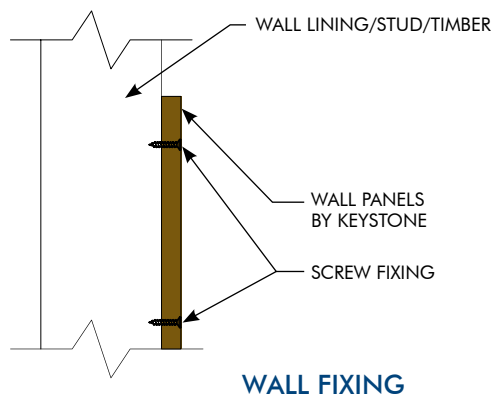
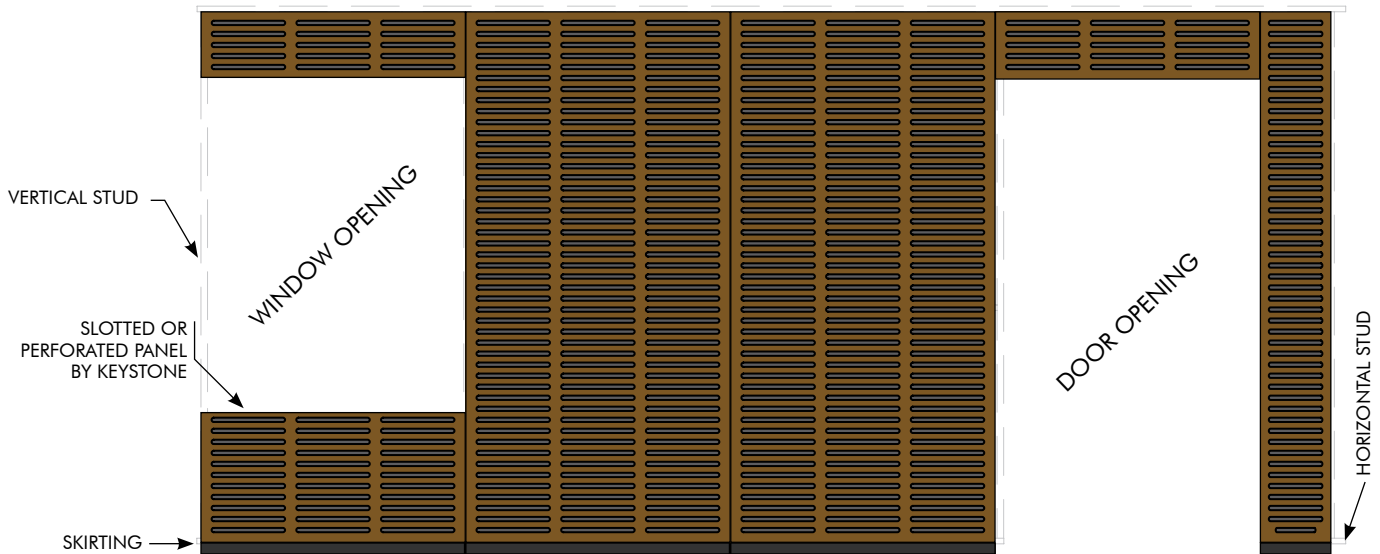
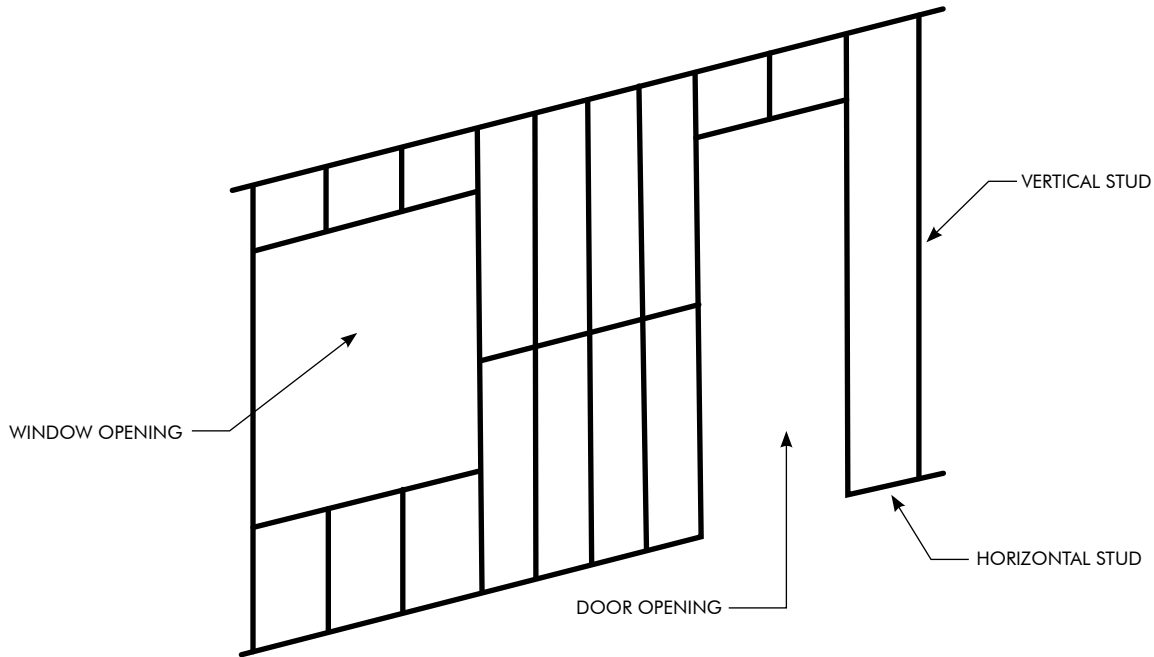


INSTALLATION GUIDE CEILING & WALLS

KEY-INK INSTALLATION GUIDE - CEILING

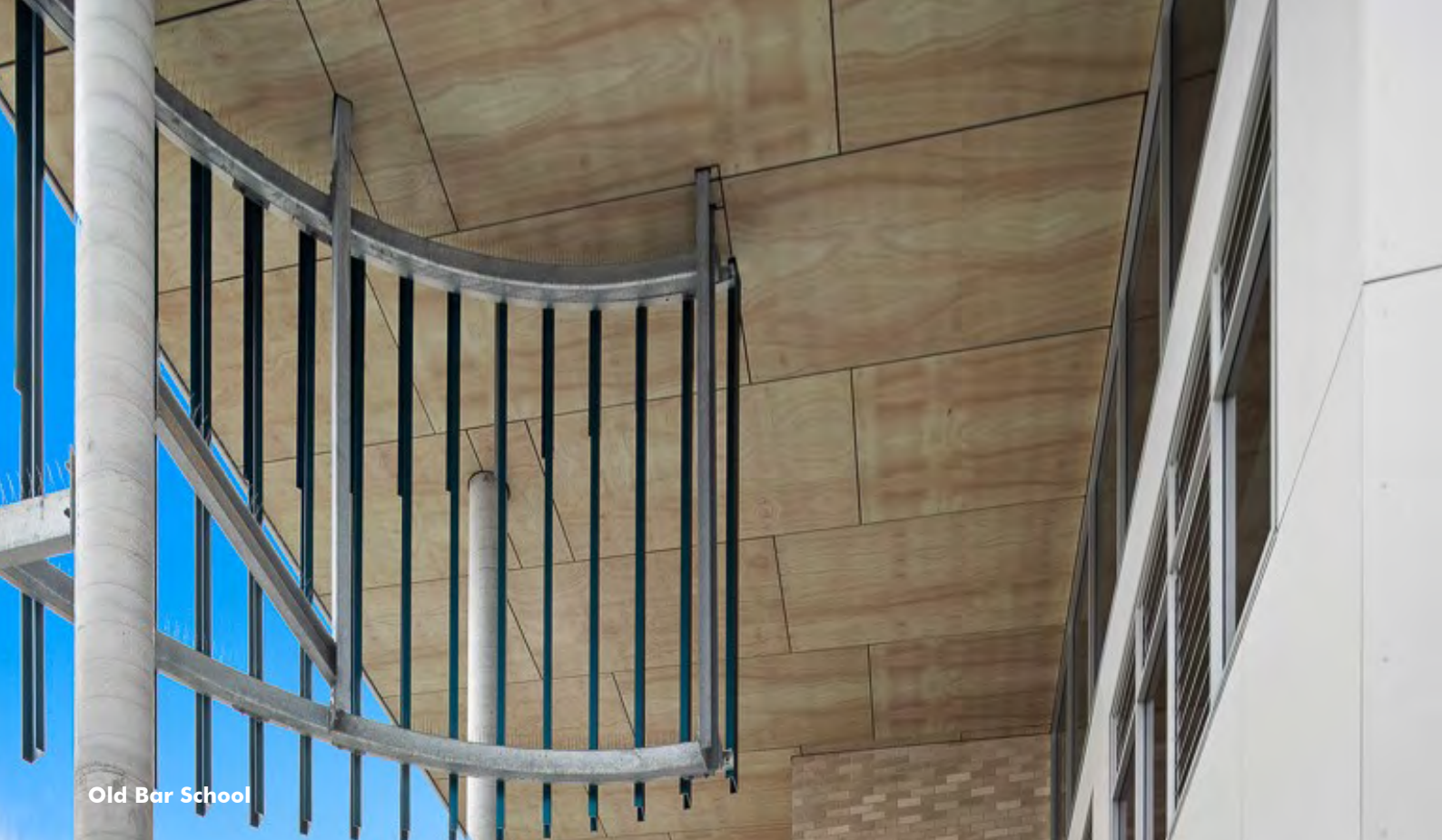


EITHER PERFORATED
OR SLOTTED PANEL
BY KEYSTONE



Refer to recessed edge installation guide for further details.

Refer to James Hardie and/or plaster manufacturer installation guide for more details.

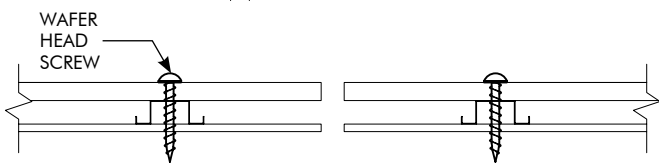
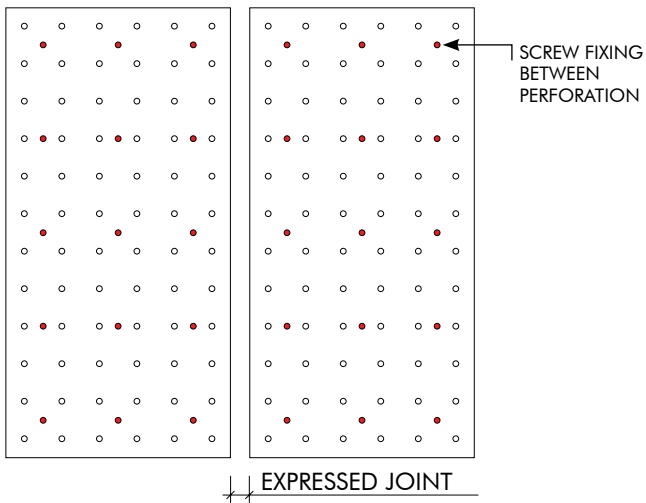


Old Bar School

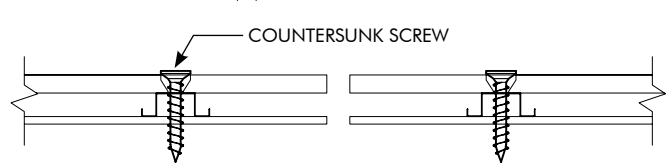
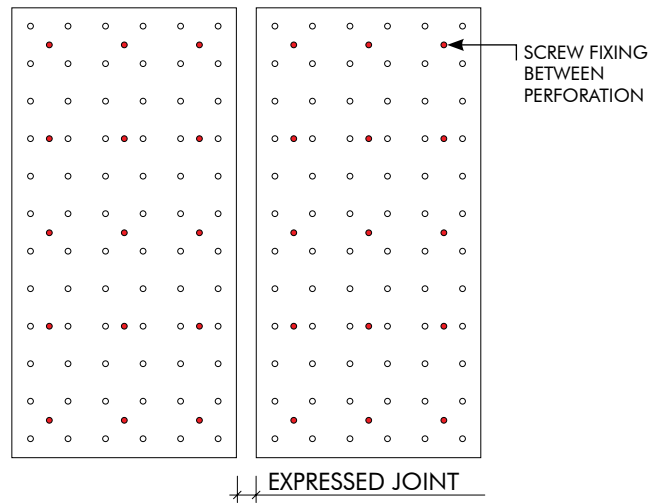
KEY-INK

EXPOSED FIXING OPTIONS - CEILING & WALLS

EXPOSED FACE FIXING - WAFFER HEAD SCREWS



EXPOSED FACE FIXING - COUNTERSUNK SCREWS



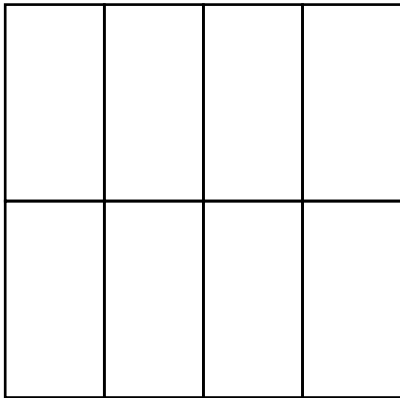


Old Bar School

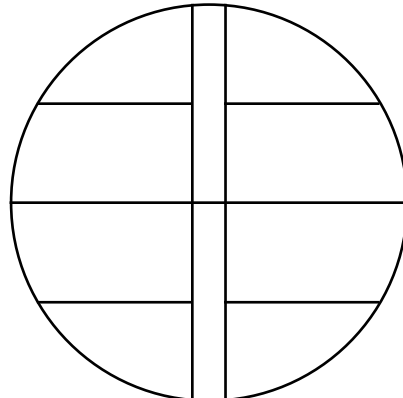
KEY-INK

PANEL LAYOUT OPTIONS - CEILING AND WALL

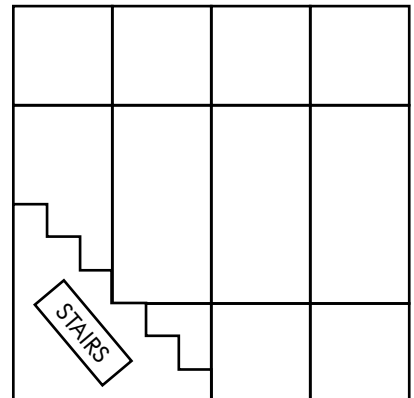
STANDARD VERTICAL LAYOUT



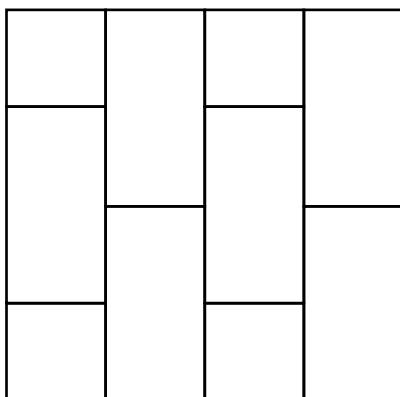
SHAPED PANELS LAYOUT



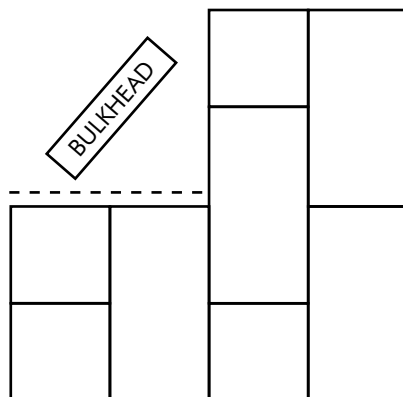
STANDARD VERTICAL LAYOUT



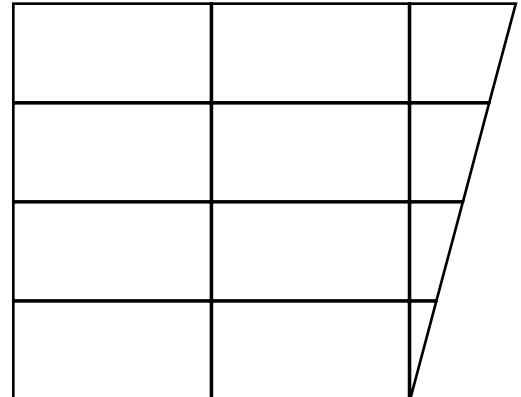
STANDARD VERTICAL BRICK PATTERN



STANDARD VERTICAL BRICK PATTERN BULKHEAD



STANDARD HORIZONTAL LAYOUT - SHAPED PANELS





Level 1, 7-8 Davis Road,
Wetherill Park, NSW 2164
02 9604 8813
www.KeystoneLinings.com.au